



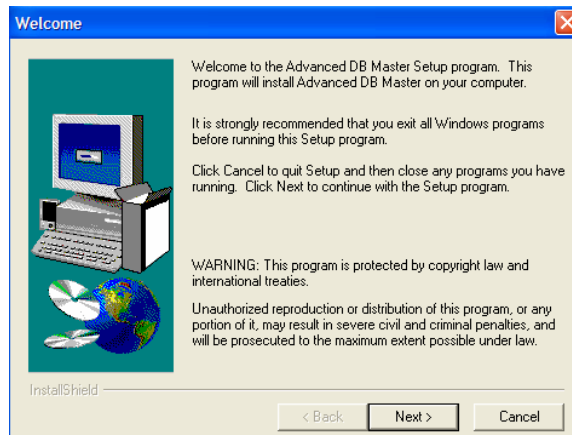
1700 Lamers Drive Suite A  
Little Chute, WI 54140  
920-788-4225

## How to Load Your Software

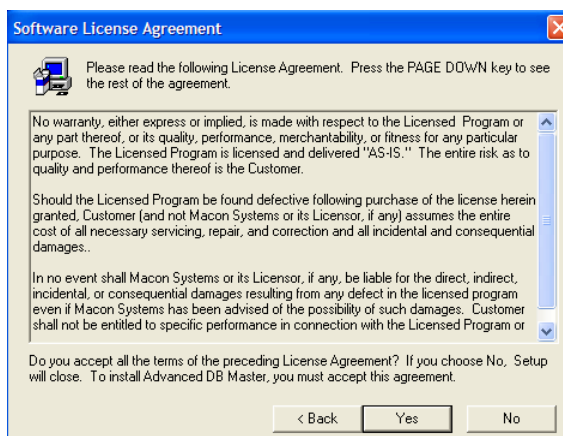
- Insert PROGRAM DISC 1 OF 1 into the computer.
  - Once the disc is running a window should pop-up with an icon saying DATAMAKERS.



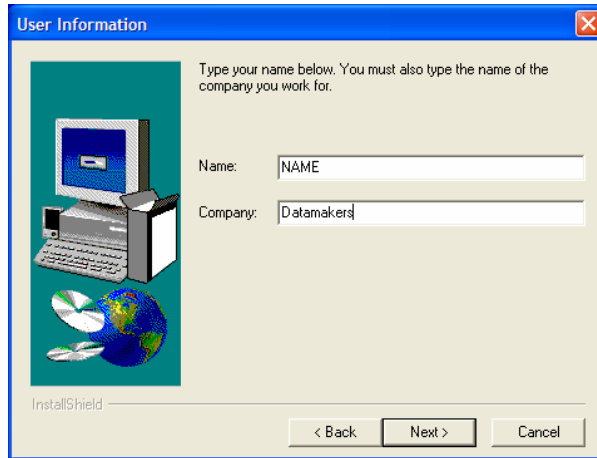
- Double click on this icon. The software will load onto the computer. This may take a few minutes.
  - The screen is now in setup mode; with a Welcome window in the middle of the screen.
  - When at the Welcome window, click the NEXT button at the bottom of the window.



- There should now be a Software License window. To agree to the terms of the license agreement, click YES.



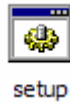
- The next window that pops-up you will need to type your name in the first field and the businesses' name in the second field.



- Once these steps are followed the software should start to install.
  - The software will not be useable until Datamakers (920-788-4225) is called to finish the setup.

### How to Load the Video Help Disc

- First insert the disc labeled VIDEO HELP DISK 1 OF 2 into the computer. Make sure it is disc 1.
  - Once the disc is running a window should pop-up containing a folder that says DISK 1 and an icon saying SETUP.  
*Click on the icon that says **SETUP**, don't click on the folder.*



setup



- Now insert the disc labeled VIDEO HELP DISK 2 OF 2 into the computer. Make sure it is disc 2
  - Once the disc is running a window should pop-up containing a folder that says DISK 2 and an icon saying INSTALL.  
*Click on the icon that says **INSTALL**, don't click on the folder.*



install

