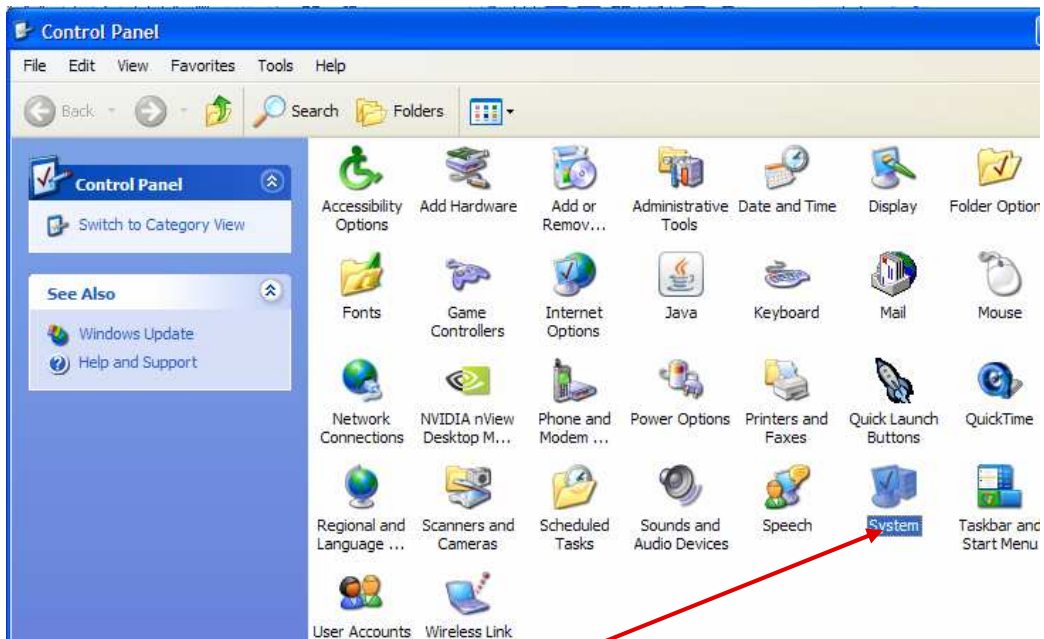


## HOW TO FIGURE OUT WHICH COM PORT YOUR SCANNER OR VERIFONE REGISTER IS CONNECTED TOO

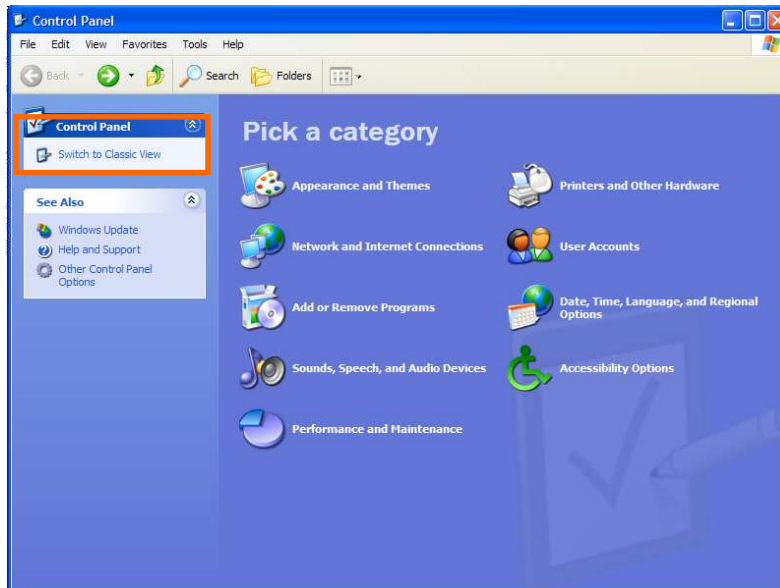


- 1) If you don't use the cable above to connect your verifone register or scanner, then this help guide doesn't apply to you.
- 2) Go to your control panel for your computer.
  - a. Go to start, at the bottom of your screen.
  - b. On the right hand side there should be an option labeled 'Control Panel'. Click on it.

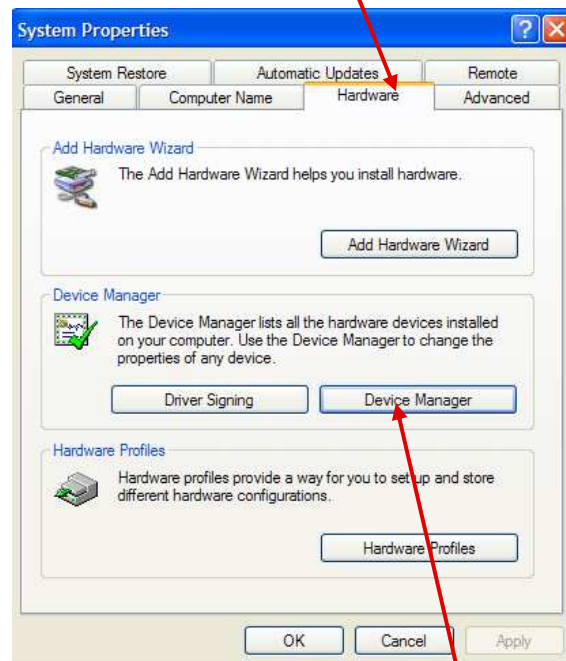


- c. Double Click on the 'Systems' Icon.

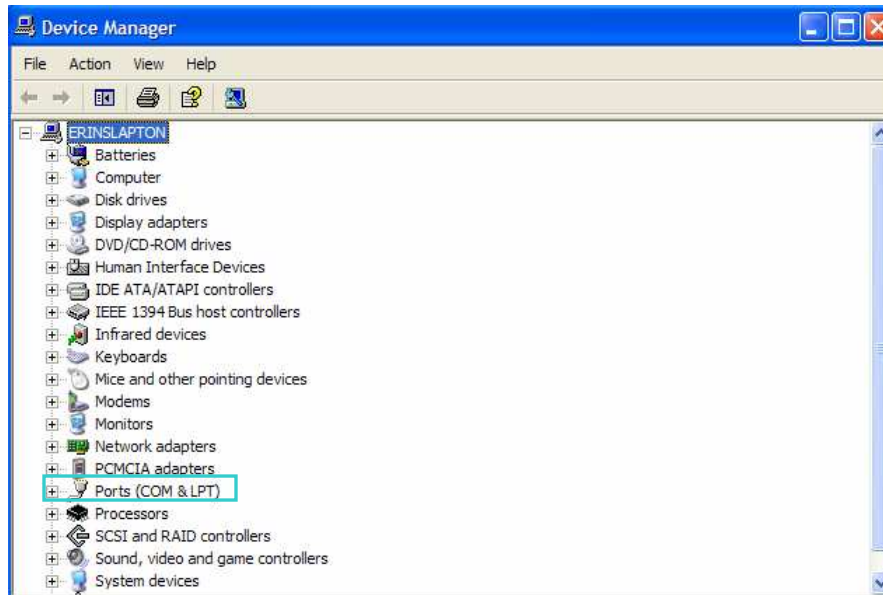
- d. If your control panel view looks like the one below, in the upper left hand corner click on switch to classic view.



- e. Click on the Hardware Tab.



- f. Click on the 'Device Manager' button.



- g. Click on the plus sign next to 'ports'.
- h. To figure out which port your USB is in, remove the USB and whichever one of the ports that goes away is the one that you are using.

